

LOW VOLTAGE SWITCHBOARDS

(UL891)



ABSOLUTE DOMINION POWER
Manufacturer Authorized Distributor
& Integrated System Provider

Low Voltage Switchboards

(UL891)

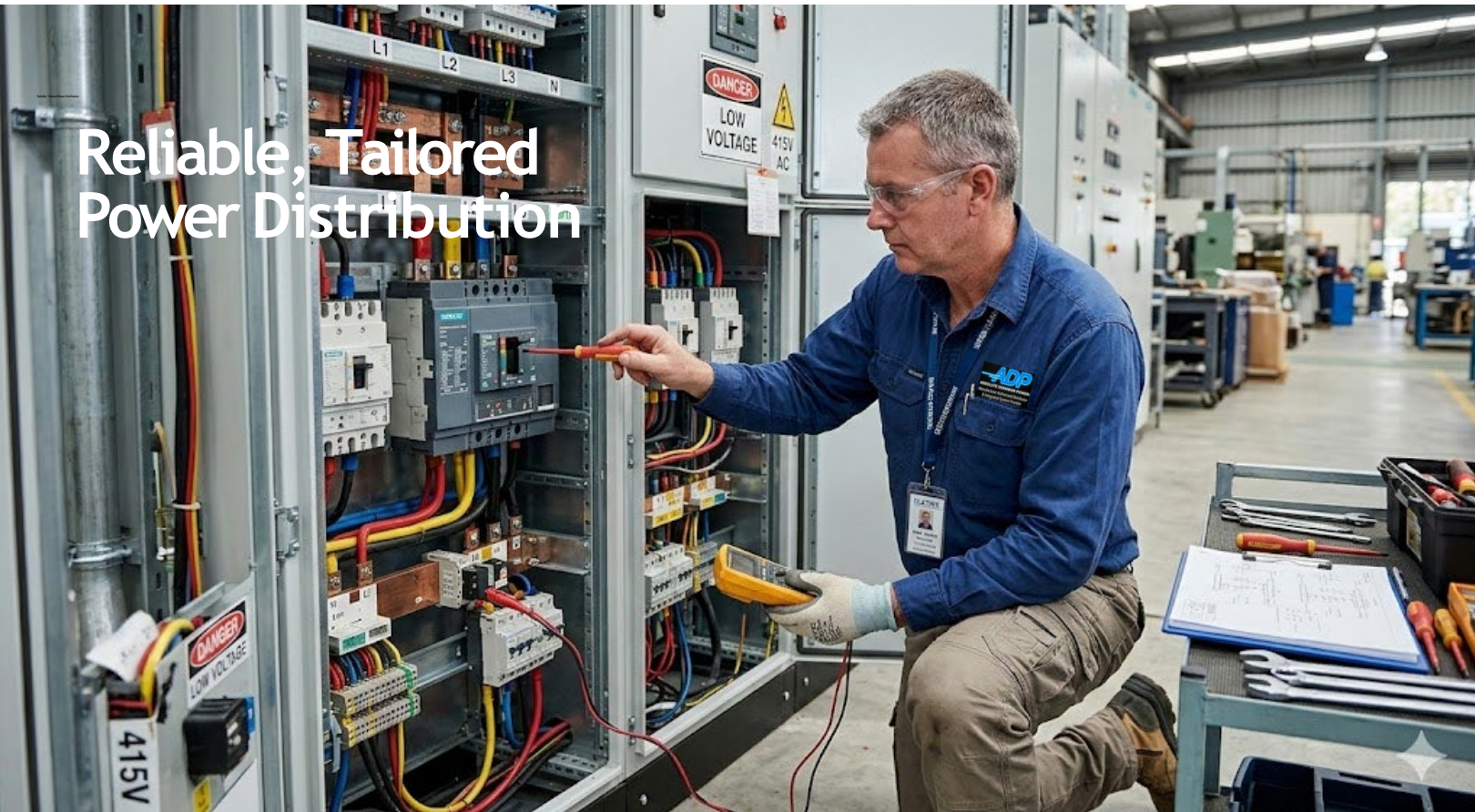
ADP's Low Voltage Switchboards (UL891) are a robust and customizable power distribution solution engineered for commercial and light industrial facilities operating at 600 volts or less. Combining ADP's durable construction and engineering expertise, these switchboards are designed to distribute power safely, reliably, and efficiently across a broad range of environments. UL891 certification ensures code compliance and safe operation, while scalable configurations and integrated protection features make it easy to tailor the switchboard to meet your facility's unique power requirements.

Whether it's a new installation or an upgrade to existing infrastructure, ADP's Low Voltage Switchboards provide a flexible, high-performance solution that supports complex load profiles and future expansion—without compromising safety, uptime, or budget.



Low Voltage Switchboard
(UL891)

Reliable, Tailored Power Distribution



www.adp-hq.com

sales@adp-hq.com

832-292-6696

1820 Red Bluff Rd, Ste A, Pasadena Tx 77506

Benefits

ADP's Low Voltage Switchboards (UL891) are built for performance, reliability, and customization—offering essential benefits for mission-critical applications and facilities with dynamic power needs.

- **Safe, Reliable, and Code-Compliant Power Distribution:** UL891 certification ensures conformance to stringent industry standards for low-voltage power distribution systems (under 600V), delivering reliable performance while enhancing facility safety. Integrated protection features minimize arc fault risks, reduce inspection delays, and support uptime in sensitive or high-demand environments.
- **Tailored System Design for Any Facility:** Custom-engineered layouts allow precise alignment with facility needs, including space constraints, unique load profiles, integration with existing systems and indoor or outdoor installation.
- **Flexible, Platformed Design for Diverse Applications:** UL891 switchboards offer a modular platform with accessible front- or rear-entry designs, configurable bus layouts, and adaptable breaker compartments—making it easy to tailor the system to a wide range of commercial and industrial power distribution needs. This flexible architecture simplifies installation, supports varying site conditions, and enables scalable future upgrades.

Key Features

- UL891 Listed Construction.
- Voltages up to 600VAC.
- Sections rated to 5000A horizontal, 3000A vertical; Single Mains to 5000A; Individually mounted Feeder Breakers to 4000A.
- Main and branch circuit protection with fixed or draw-out breakers.
- Integrated Power Distribution Panelboard options.
- Digital metering, energy monitoring, surge protection, and communication integration.
- Indoor or outdoor enclosures are available in NEMA 1 or 3R ratings.
- Custom-built for front-only or front/rear access configurations.
- Options for Service Entrance available.

Applications

ADP Low Voltage Switchboards are engineered for organizations that demand safe, scalable, and code-compliant electrical distribution in mission-critical or space-constrained environments. Whether you're powering a data center, hospital, university, government facility, or light industrial plant, ADP delivers reliable low-voltage performance ($\leq 600V$) with fully customizable configurations, integrated protection and metering, and UL891 compliance.

Designed to support centralized electrical rooms, growing power needs, and unique site layouts, these switchboards are ideal for:

- Data centers and IT hubs with high-density distribution requirements
- Healthcare, education, and government buildings with strict safety standards
- Commercial properties with limited electrical room space
- Light industrial and manufacturing facilities with multiple load centers
- Contractors and engineers needing tailored solutions with a compact footprint

Available Options

- **Breaker Options:** 3-Pole or 4-Pole breakers with 100% ground-rated conductor option. Available with molded case or insulated case breakers, in fixed or draw-out configurations. Electronic Operation option. Electronic Trip Units (ETUs) with LSI, LSIG, or LSIA protection, and communications capability.
- **Enclosure Options:** Environmental Ratings – Indoor and Outdoor NEMA 1 or 3R Mild Steel. Multiple sizes available depending on needs.
- **Control and Monitoring Add-Ons:** Supports a wide array of device solutions, including Surge Protection Device (SPD), Analog and Digital Power Metering, Sequence Event Recording, and Power Quality Monitoring.
- **Integrated System Pairings:** Compatible with ADP docking stations, transfer switches, and temporary power solutions for seamless backup and emergency power integration.
- **Customization Support:** Custom layouts, footprints, and bus riser configurations available. Engineered to meet site-specific requirements and retrofit applications.

